

# Common coordinate scaffolds for mapping and modeling organs

Peter Hunter



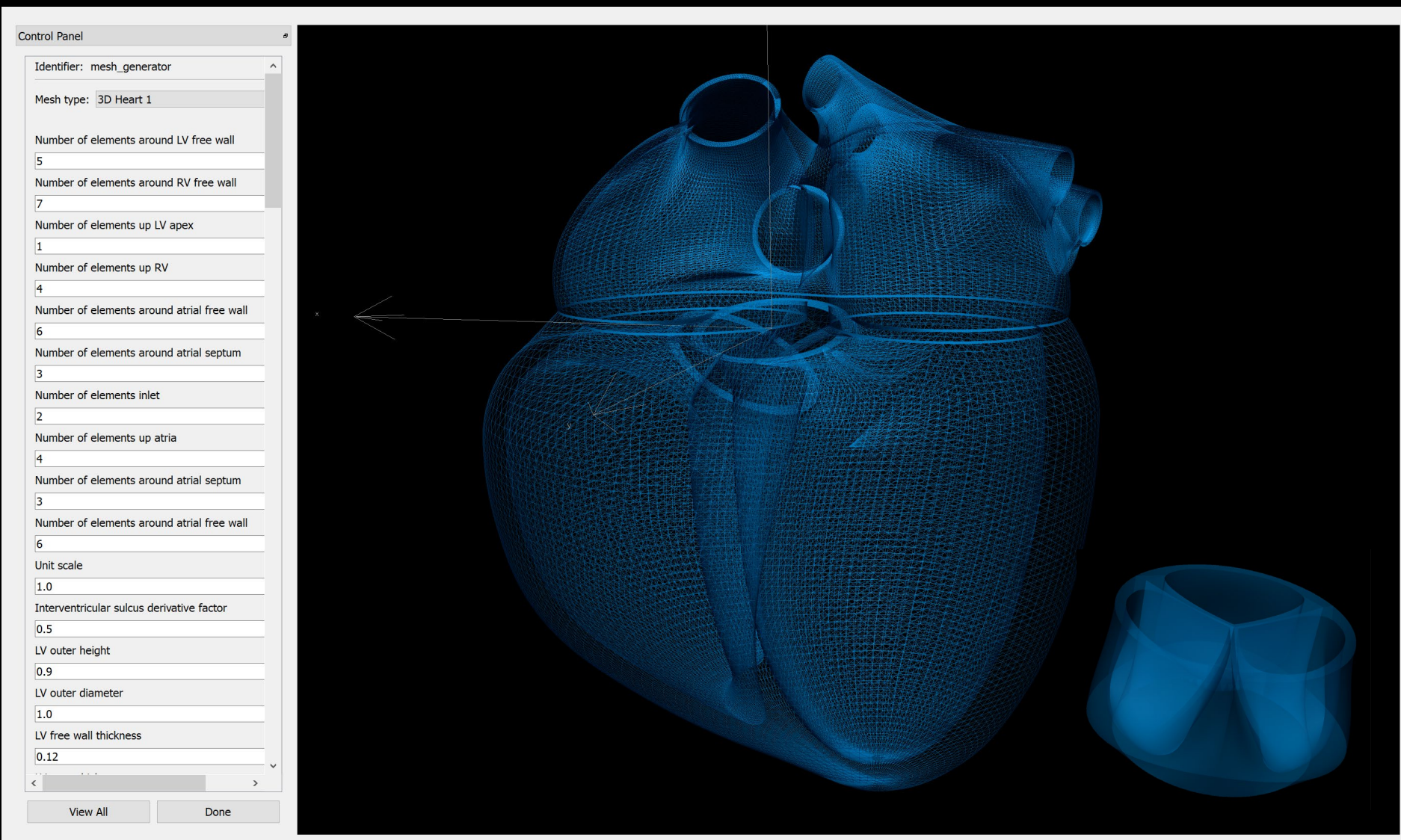
THE UNIVERSITY OF  
**AUCKLAND**  
Te Whare Wānanga o Tāmaki Makaurau  
NEW ZEALAND

**AUCKLAND  
BIOENGINEERING  
INSTITUTE**

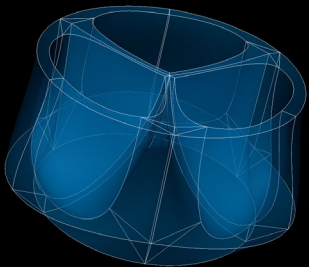
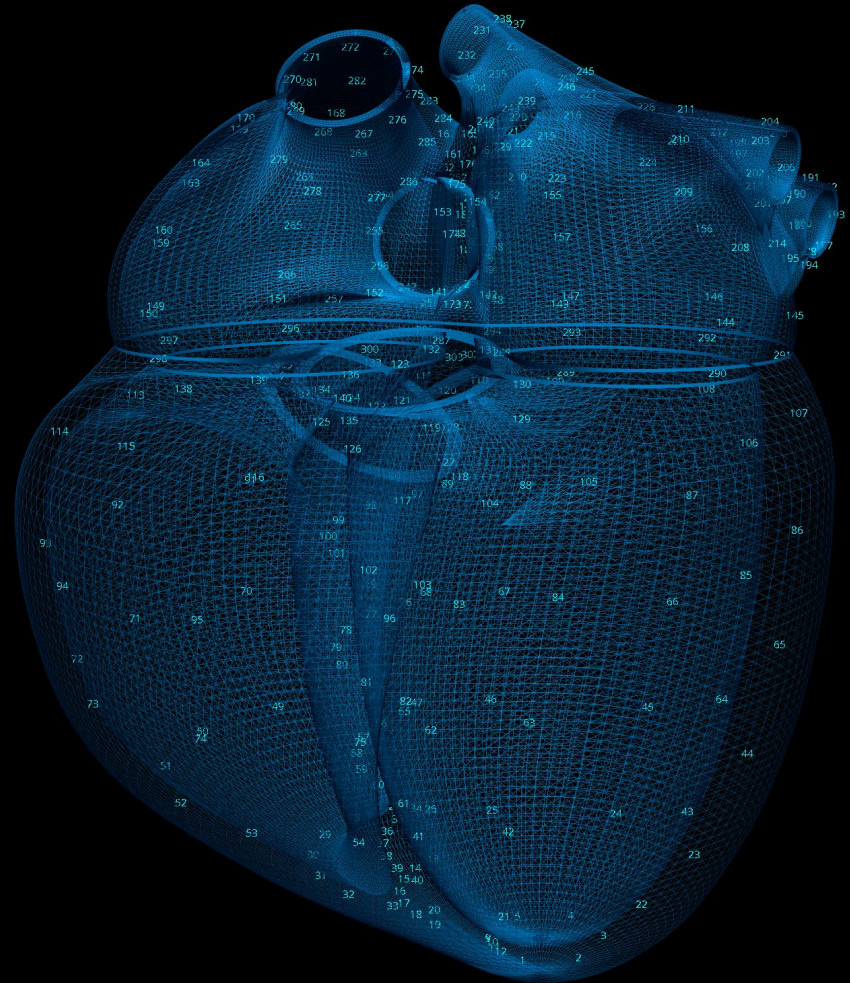
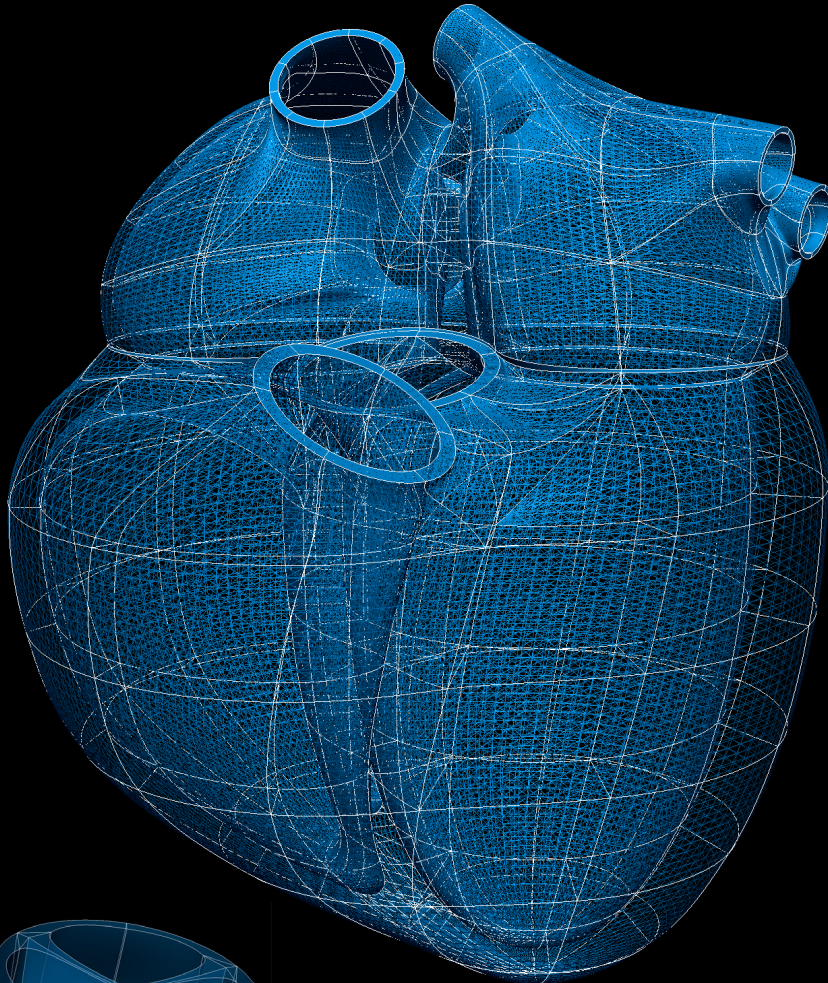
**1. Heart scaffold**

**2. Stomach scaffold**

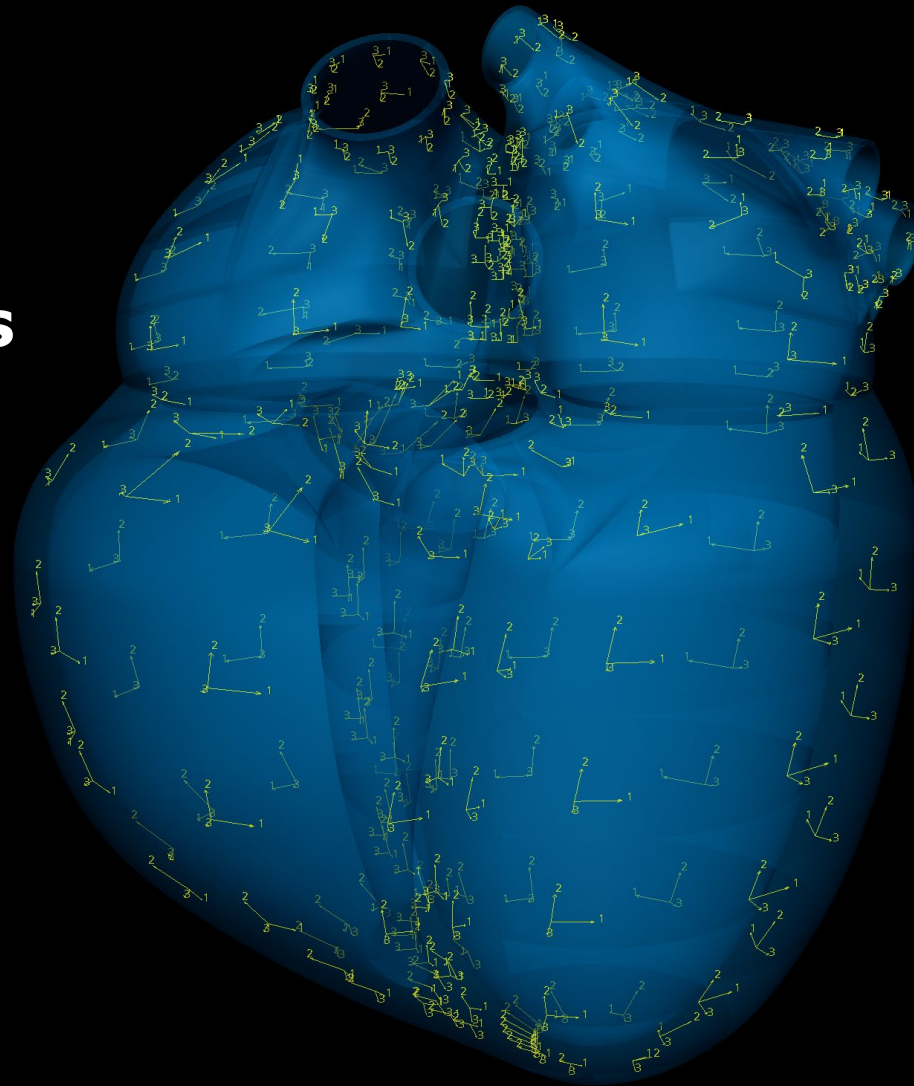
# A biological CAD platform: Heart scaffold



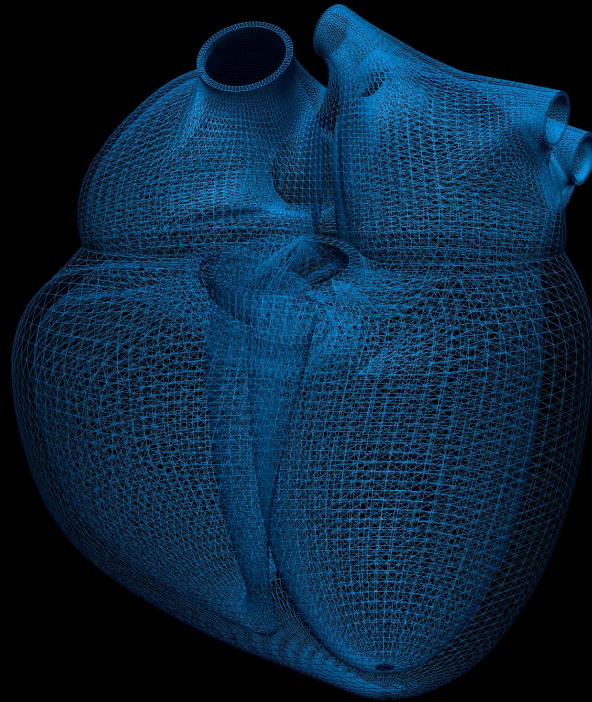
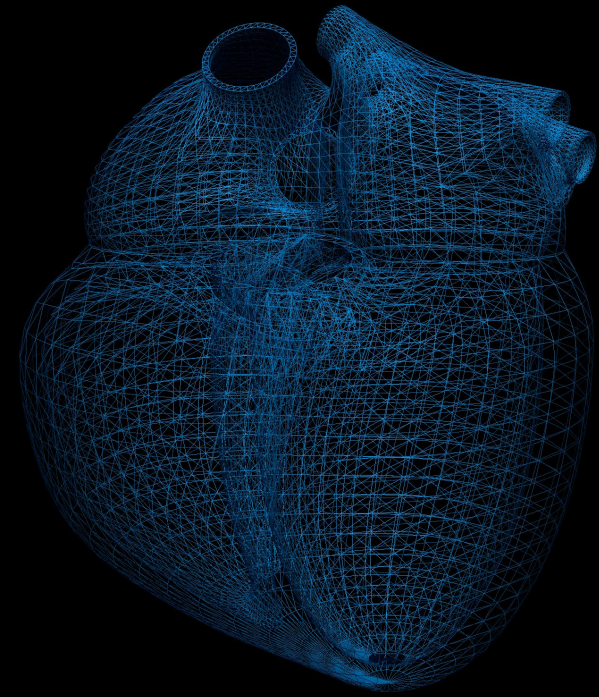
# Tricubic Hermite Elements establish the material coords



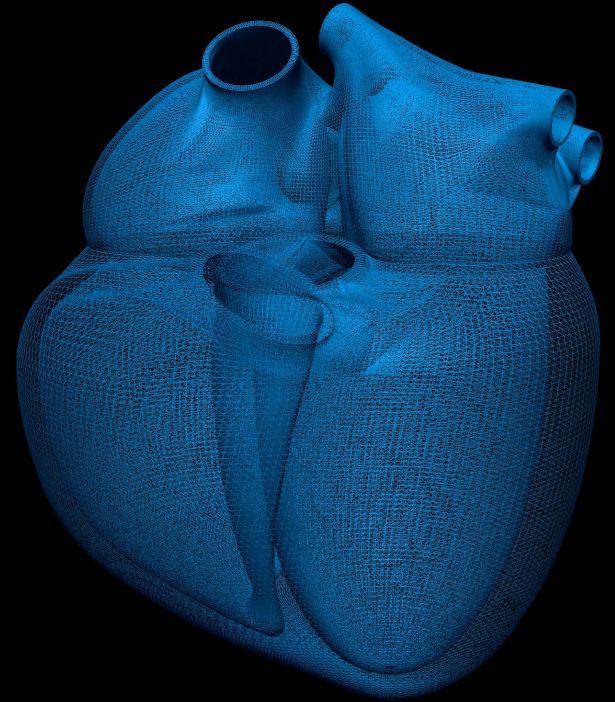
# Material axes



# Exporting meshes for simulation

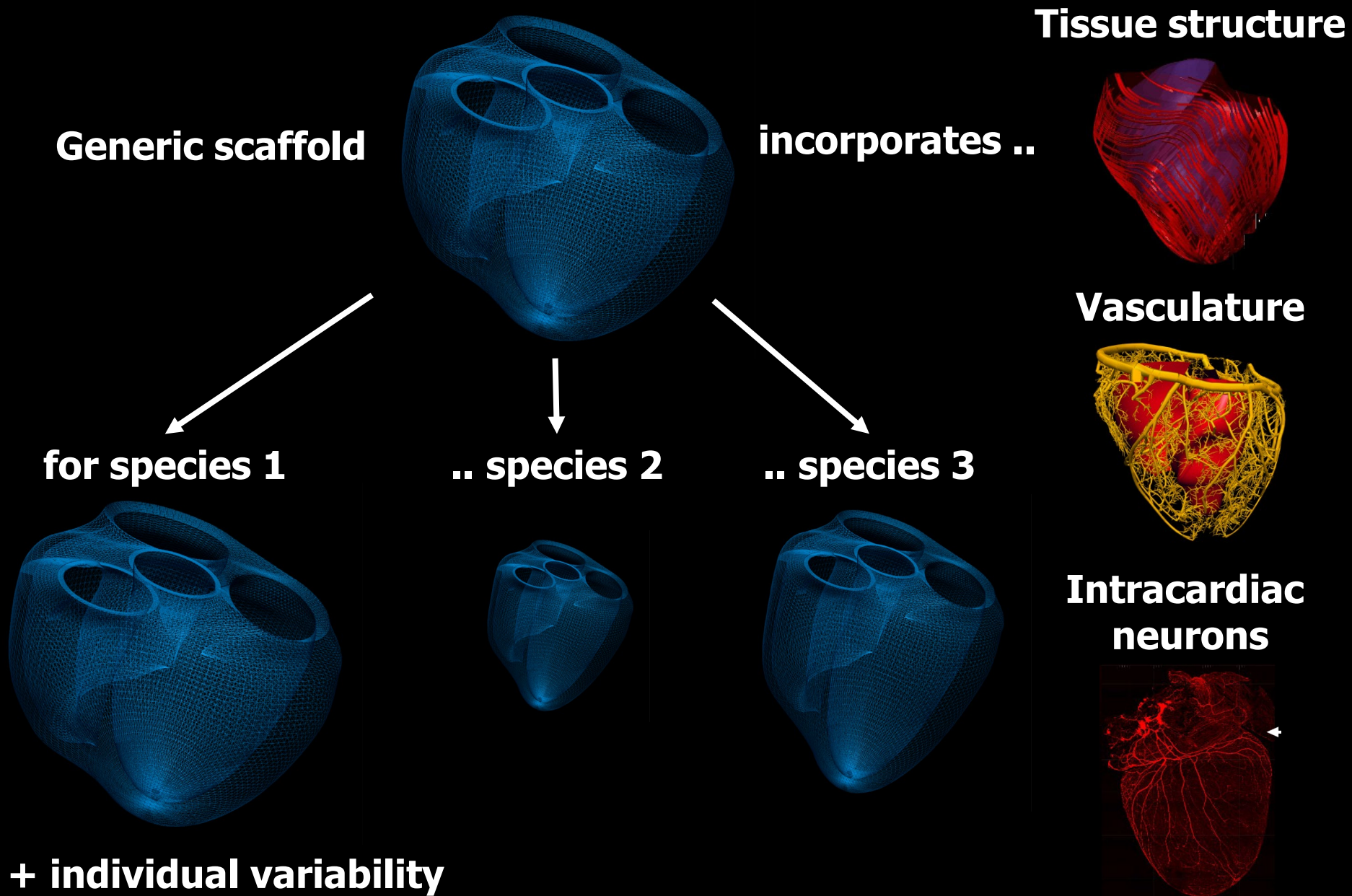


**2x refinement**



**4x refinement**

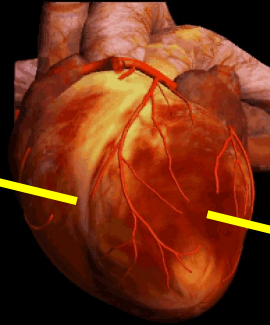
# Species dependent scaffolds



# The heart physiome

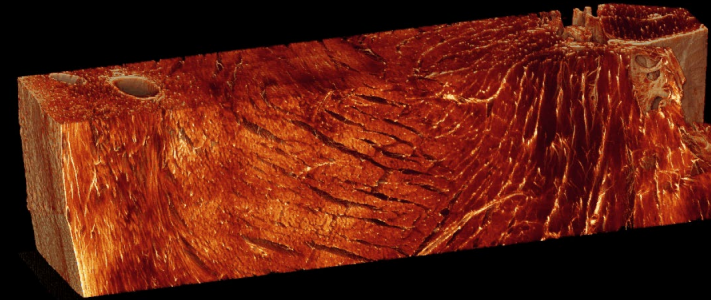


torso



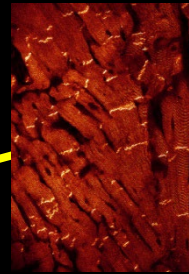
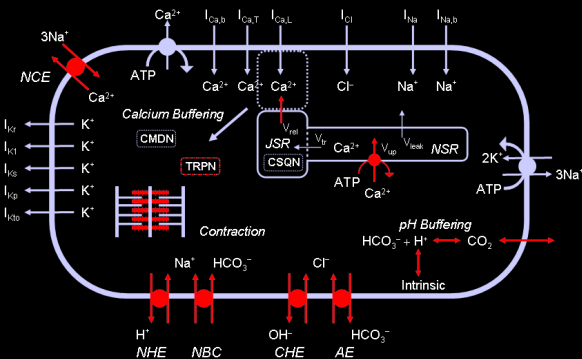
heart

tissue



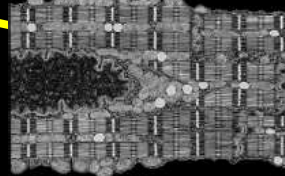
©2005 Structural Imaging : Bioengineering Institute : The University of Auckland

cellular processes



cell-cell connections

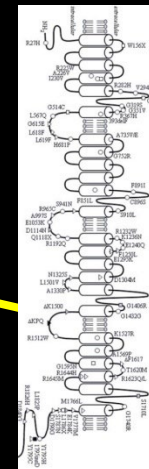
3D cell



proteins



amino acid sequence



genomic sequence

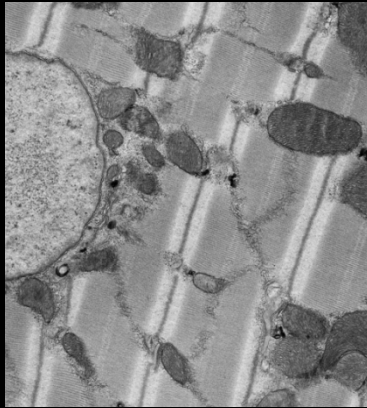


m  
= 10<sup>9</sup> nm

nm

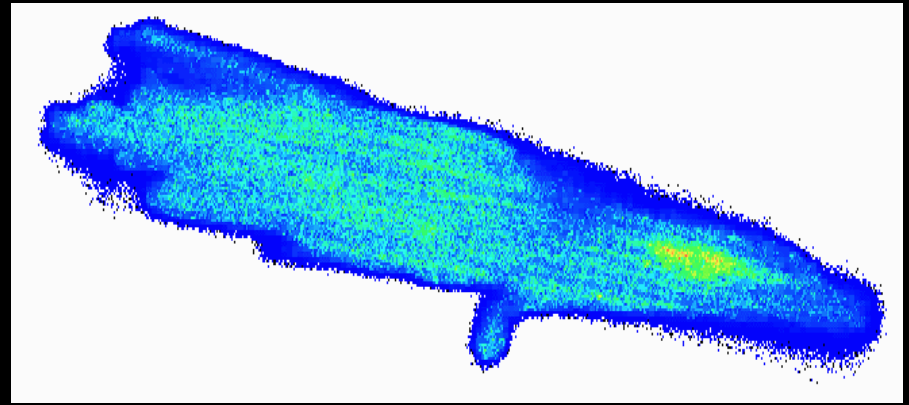


# Molecular scale



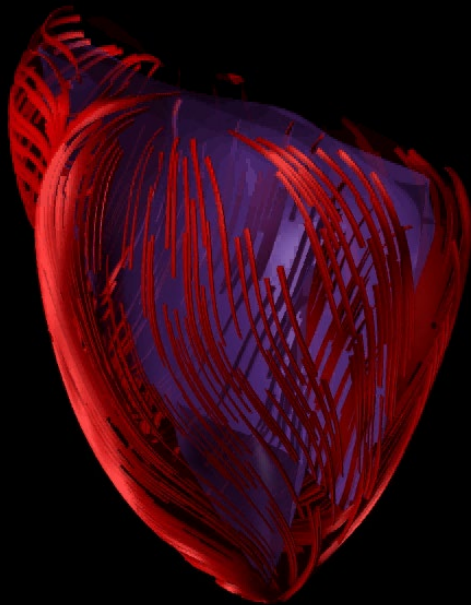
↔  
2μm

# Cellular scale

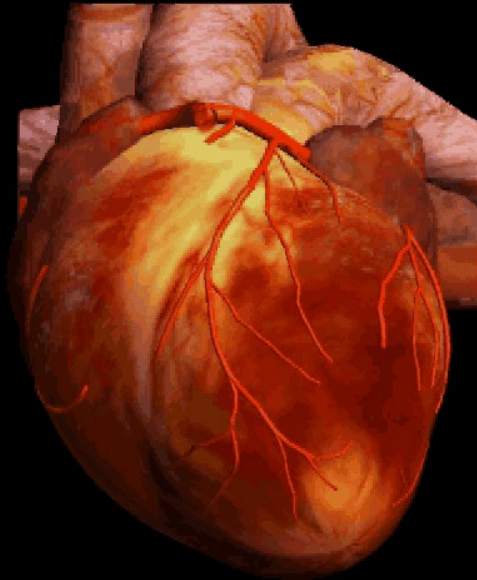


↔  
100μm

# Tissue/organ scale



↔  
10mm



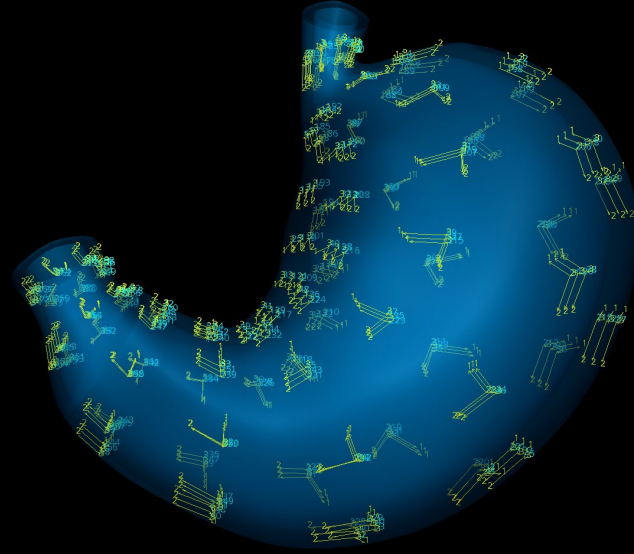
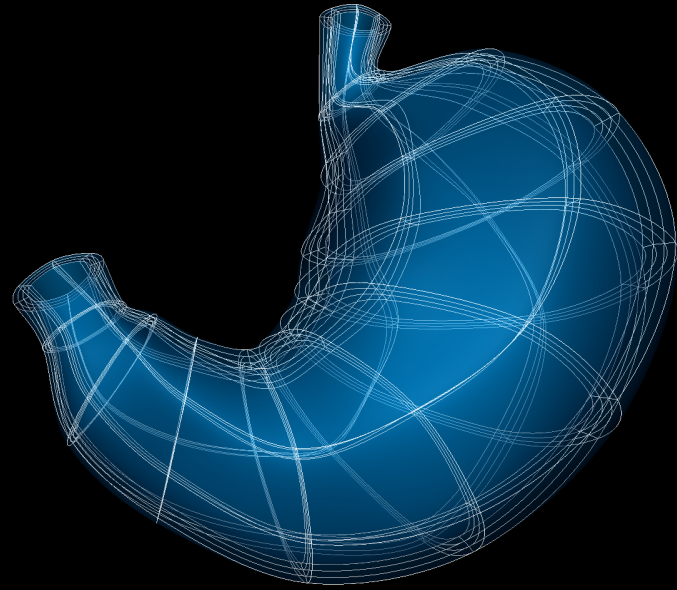
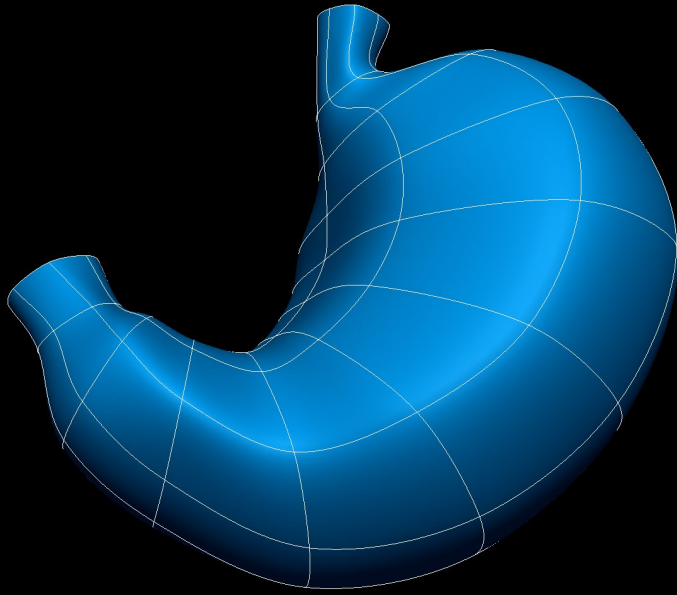
# Clinical scale



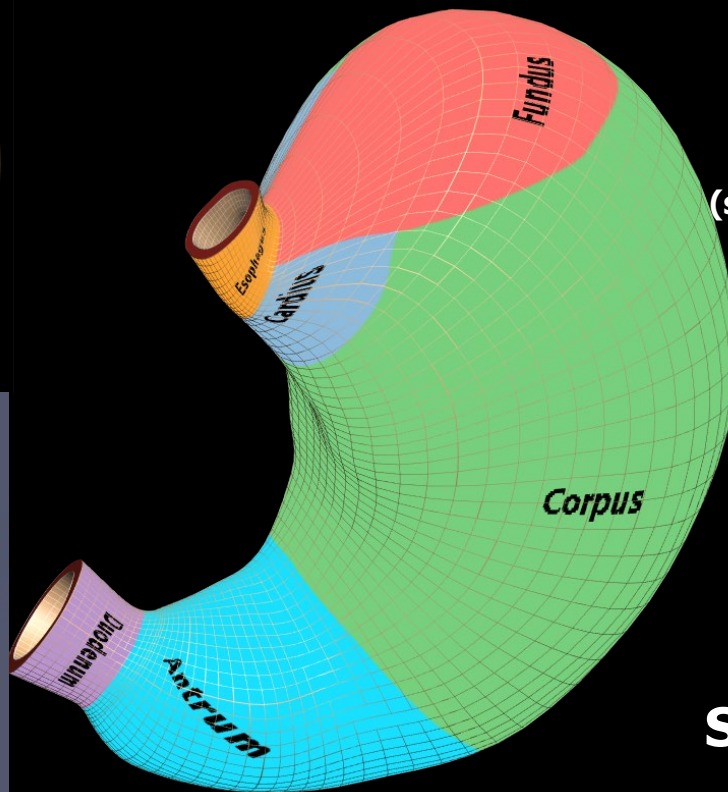
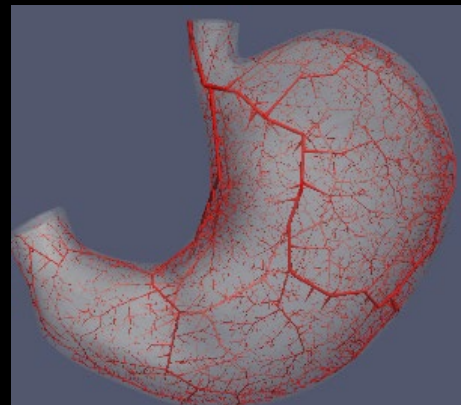
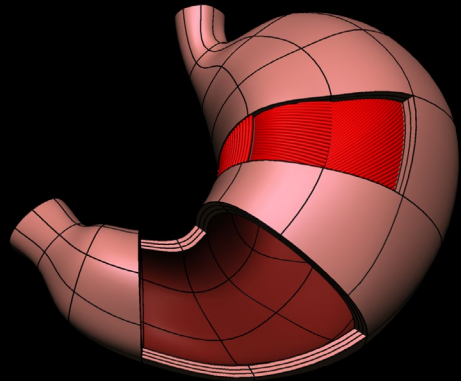
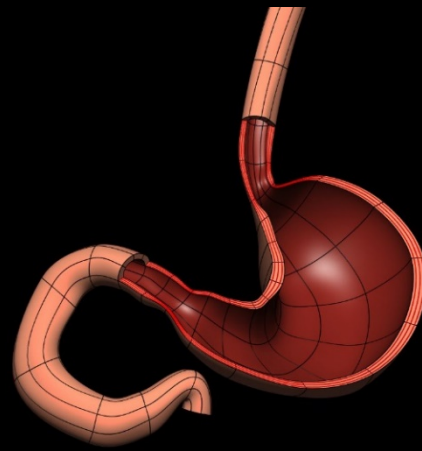
**1. Heart scaffold**

**2. Stomach scaffold**

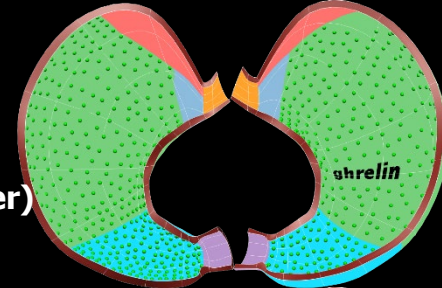
# Stomach scaffold



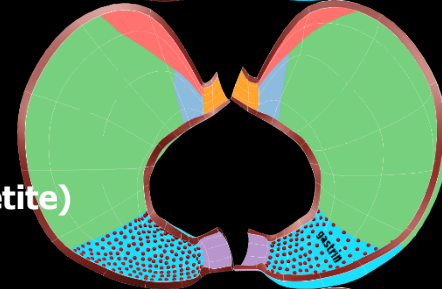
# Structure & function in the stomach



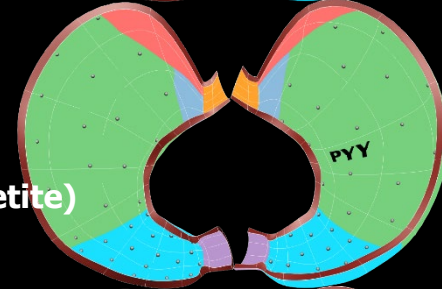
**Ghrelin**  
(signals hunger)



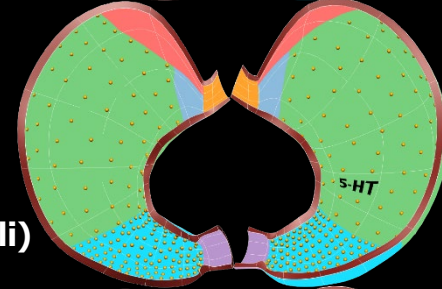
**Gastrin**  
(stimulates appetite)



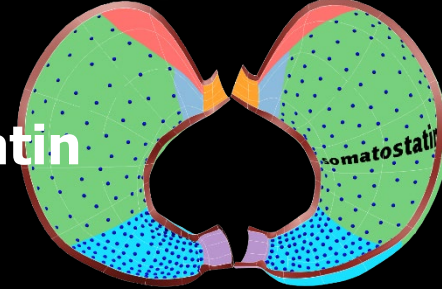
**PYY**  
(suppresses appetite)



**5-HT**  
(responds to noxious stimuli)



**Somatostatin**  
(pH control)

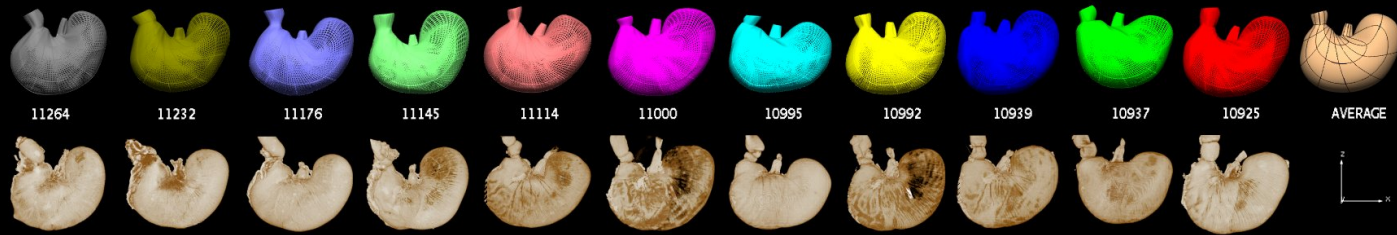


# Mapping neurites in the stomach

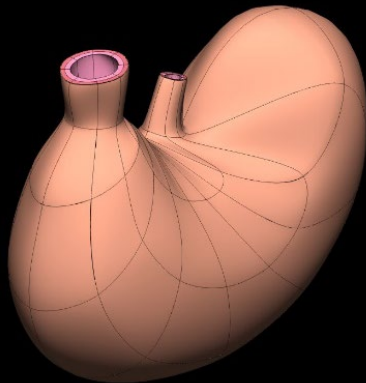


**Data from Terry Powley group at Purdue**

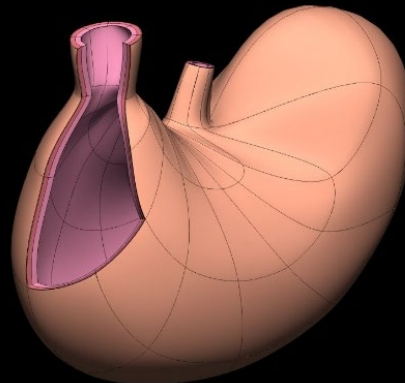
# Averaging



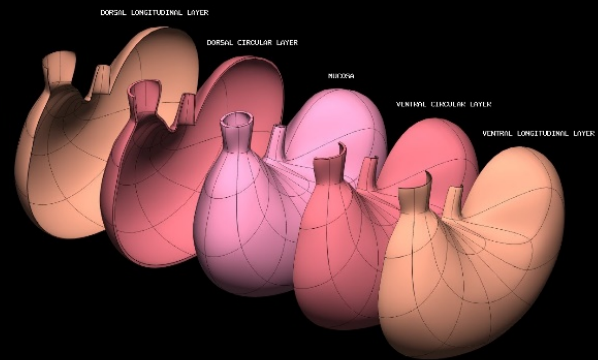
(a)



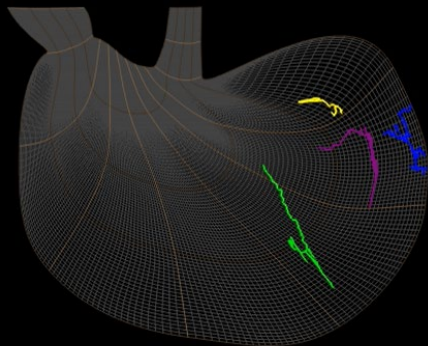
(b)



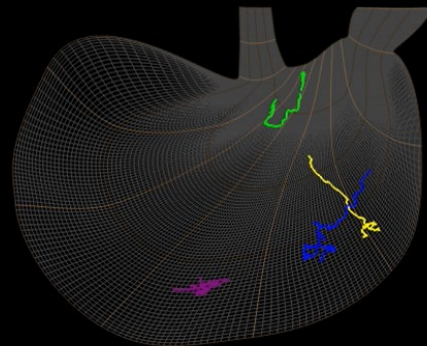
(c)



(d)



(e)



(f)

